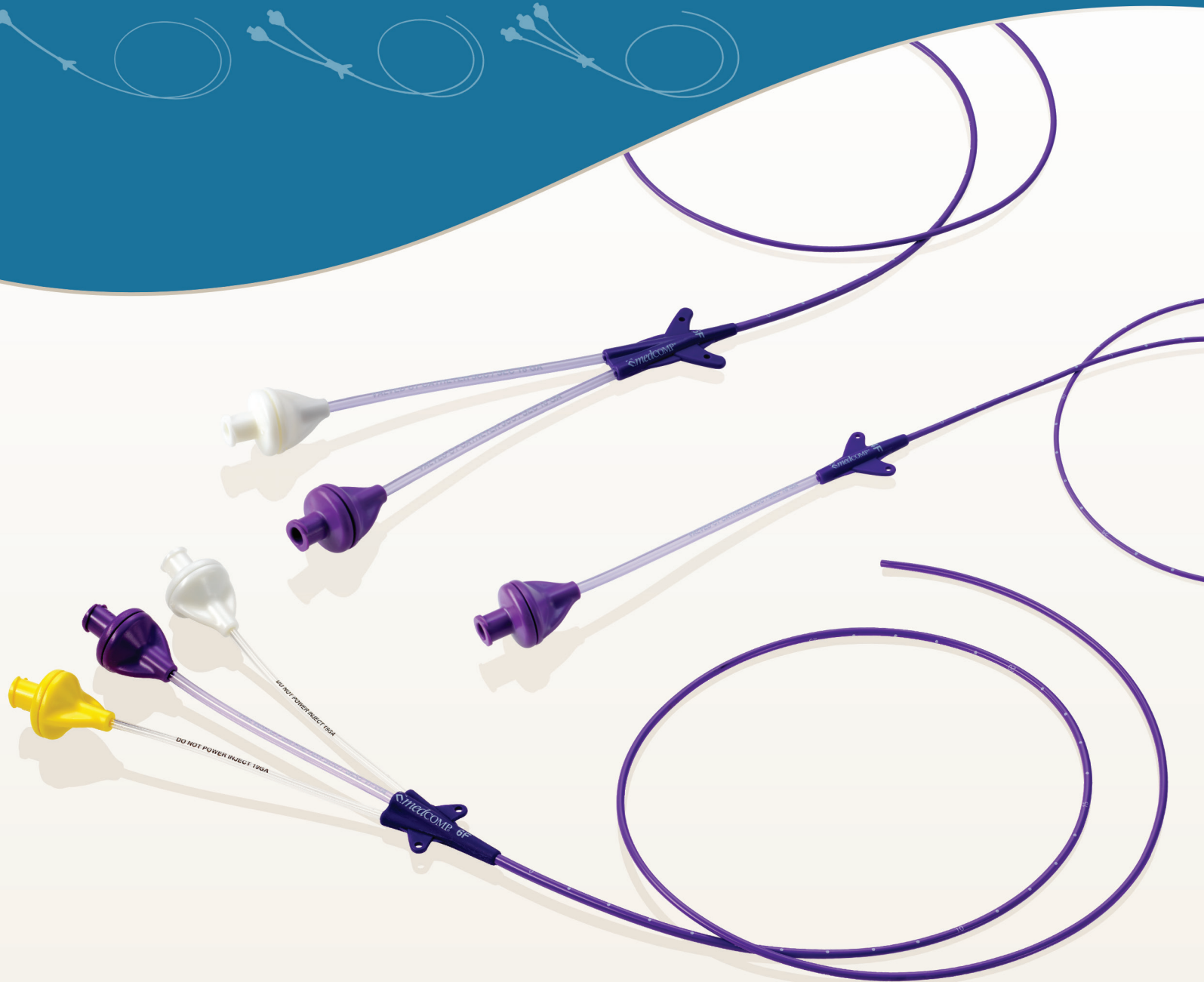


PRO-PICC[®]

VALVED CATHETERS



Features & Benefits

➤ **Valve Identification**

All valved PICCs are labeled on the extensions.

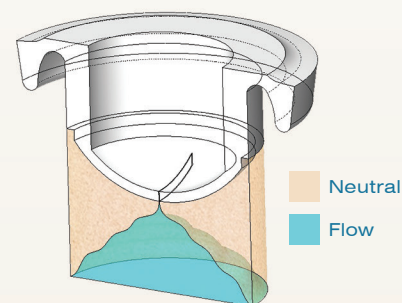
➤ **Power Injection Rates**

5cc/sec at 300psi on all Pro-PICC[®] valved catheters.

➤ **Saline Only Flush**

➤ **Clamp Free Extensions**

PRO-PICC® VALVED CATHETERS



CODE	BASIC SET	UOM
MD82034101	4F X 55CM SINGLE LUMEN PRO-PICC® VALVED	5/BOX
MD82035101	5F X 60CM SINGLE LUMEN PRO-PICC® VALVED	5/BOX
MD82035201	5F X 55CM DUAL LUMEN PRO-PICC® VALVED	5/BOX
MD82036301	6F X 60CM TRIPLE LUMEN PRO-PICC® VALVED	5/BOX

Basic Set Contains: (1) PICC (1) Peelable Introducer (1) Mini Scalpel (1) Guidewire (1) 10cc Syringe (1) Tape Measure (1) Introducer Needle (1) 1213 Needleless Connector(s) (1) Catheter Securement Device

Important Risk Information

Indications For Use: The Pro-PICC® CT catheter with valve technology is indicated for short or long term peripheral access to the central venous system for intravenous therapy and power injection of contrast media, and allows for central venous pressure monitoring. For blood sampling, infusion, or therapies, use a 4F or larger catheter. The maximum recommended infusion rate varies by catheter French size and is printed on the catheter.

Contraindications:

- The presence of device related infection, bacteremia, or septicemia is known or suspected.
- The patient's body size is insufficient to accommodate the size of the implanted device.
- The patient is known or is suspected to be allergic to materials contained in the device.
- There has been past irradiation of prospective insertion site.
- There have been previous episodes of venous thrombosis or vascular surgical procedures at the prospective placement site.
- There are local tissue factors that may prevent proper device stabilization and/or access.

Refer to Instructions for Use for complete instructions, warnings, and contraindications. Observe all Instructions for Use prior to using products. Failure to do so may result in patient complications.

